

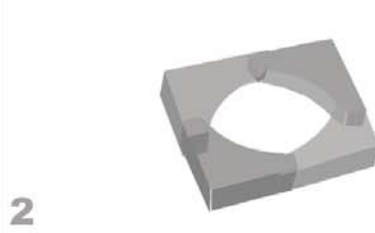
BIG BEN CLOCK TOWER

Slot four magazine files together to make roof base

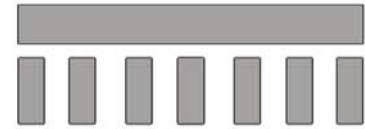


1

This should be big enough to fit on top of the large storage box

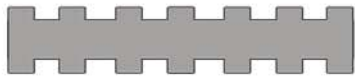


2



3 Make ramparts by cutting four strips the same length as the roof base you just made, then cut some smaller strips

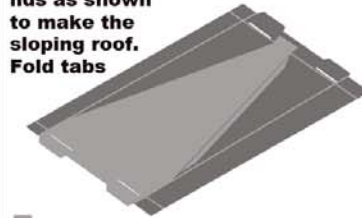
3



4 Glue small strips on to make the ramparts

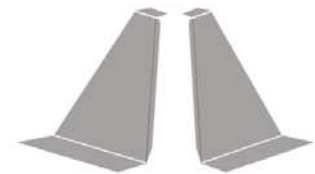
4

5 Cut four box lids as shown to make the sloping roof. Fold tabs



5

6



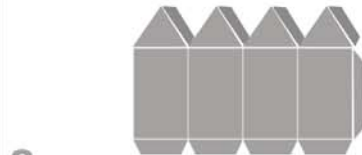
6 Glue the four pieces together to make the sloping roof

7 Fold up the tabs at the bottom of the sloping roof. Measure the length at the top.



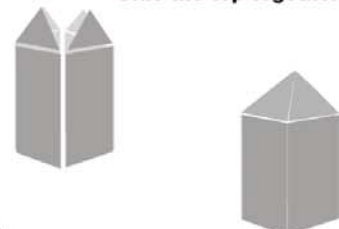
7

8 Make the top of the tower from a box lid. It should fit on top of the sloping roof



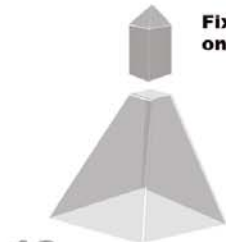
8

9 Glue the top together



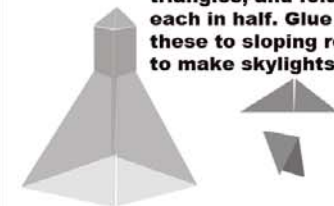
9

10 Fix top section onto sloping roof



10

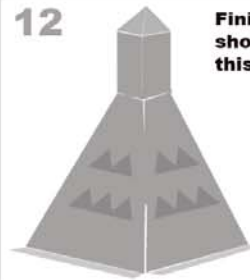
11 Make 20 small triangles, and fold each in half. Glue these to sloping roof to make skylights



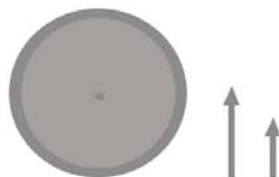
11

12

Finished roof should look like this.

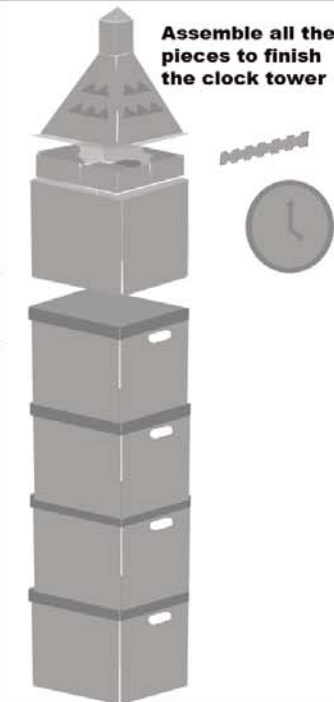


13 Cut four circles from lids to make clock faces, add hands



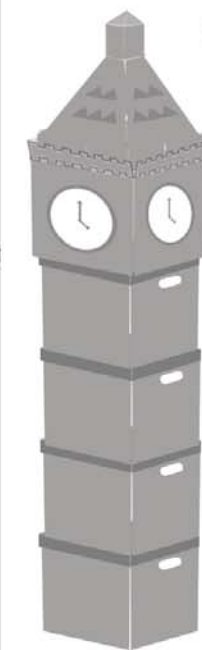
13

14 Assemble all the pieces to finish the clock tower



14

Well done!



15

Materials:
Standard storage boxes, large storage box, Magazine files, spare cardboard, Knife or scissors, Glue

Time: 15-30 minutes

Steps:

- 1- assemble roof base from magazine files
- 2- make ramparts
- 3- make sloping roof
- 4- make top of tower
- 5- add skylights
- 6- make clock faces and fix to large storage box
- 7- make a tower of boxes
- 8- assemble all the parts
- 6- make clock faces and fix to large storage box
- 7- make a tower of boxes
- 8- assemble all the parts

Safety: please take care when using sharp objects

bankersbox.fellowes.com

BANKERS BOX
STRENGTH YOU CAN COUNT ON™

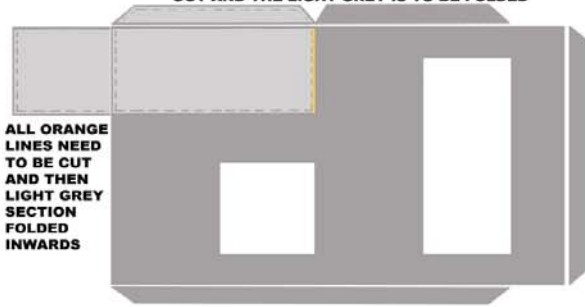
STORAGE BOXES



LONDON BUS

1 BACK

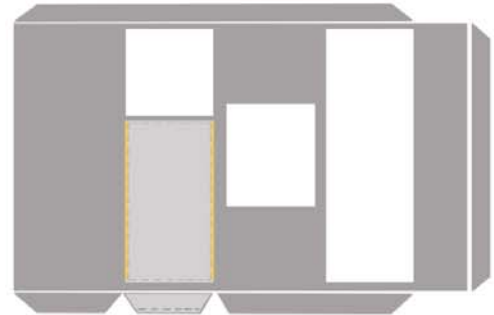
START WITH THE BACK OF THE BUS
CUT A RECTANGLE WITH TABS AS SHOWN
THE WHITE AREAS ARE COMPLETELY CUT OUT AND THE LIGHT GREY IS TO BE FOLDED



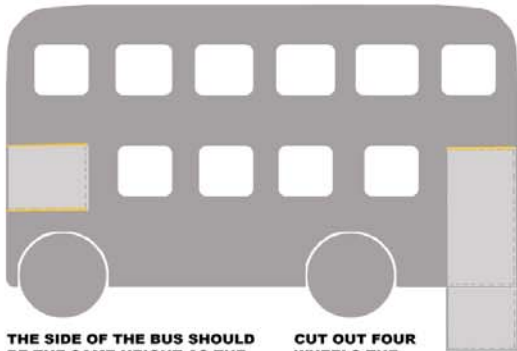
ALL ORANGE LINES NEED TO BE CUT AND THEN LIGHT GREY SECTION FOLDED INWARDS

2 FRONT

USE THE BACK AS A TEMPLATE TO CUT THE FRONT
EDIT THE TABS AS APPROPRIATE



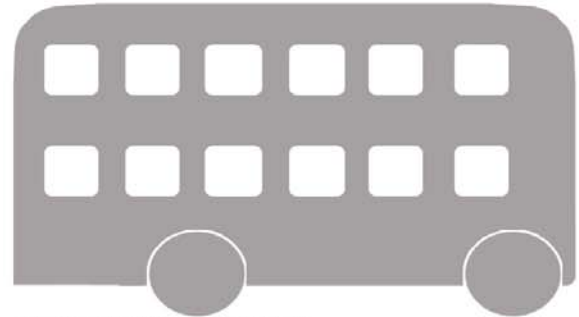
3 LEFT SIDE



THE SIDE OF THE BUS SHOULD BE THE SAME HEIGHT AS THE FRONT AND THE BACK

CUT OUT FOUR WHEELS THE SAME SIZE

4 RIGHT SIDE



USE THE LEFT SIDE AS A TEMPLATE THERE IS NO FRONT WINDOW OR REAR DOOR TAB

5



CUT ROOF WITH TABS THE SAME LENGTH AS THE SIDE OF THE BUS AND THE SAME WIDTH AS THE ENDS

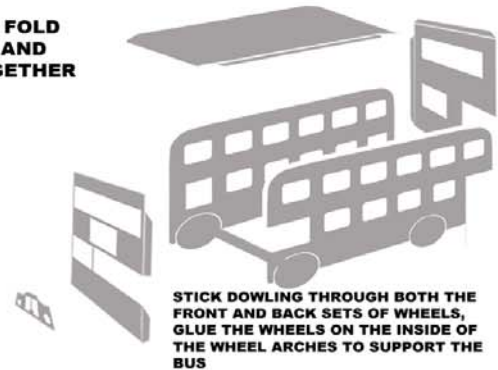
TWO PIECES OF DOWLING FOR AXELS

ROOF, GRILL & AXELS

ASSEMBLY

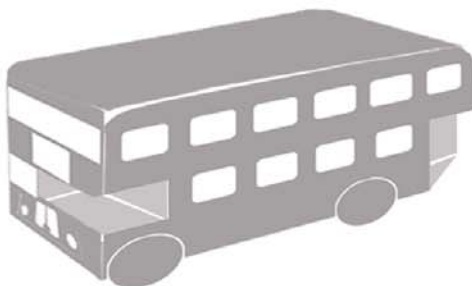
6

ALL TABS FOLD INWARDS AND GLUE TOGETHER



STICK DOWLING THROUGH BOTH THE FRONT AND BACK SETS OF WHEELS, GLUE THE WHEELS ON THE INSIDE OF THE WHEEL ARCHES TO SUPPORT THE BUS

7 FINISHED BUS



Materials:

Standard storage boxes,
spare cardboard, dowling,
knife or scissors & glue

Safety: please take care when using sharp objects

bankersbox.fellowes.com

BANKERS BOX
STRENGTH YOU CAN COUNT ON™

STORAGE BOXES



SMALL HOUSE

USE A STORAGE BOX LID

MAKE A CUT HERE, IN THE MIDDLE, UP TO THE SECOND FOLD. DUPLICATE AT THE OTHER END

ROOF

FOLD THE ROOF UP SO THAT THE TABS MEET

CUT OUT A TRIANGLE THAT GOES FROM THE CENTRE TO THE EDGE OF THE TAB

GLUE TOGETHER SO THE TABS MEET

ONCE BOTH ENDS ARE GLUED CUT OFF EXCESS SO YOU GET A NICE TRIANGULAR ROOF

SKYLIGHT

TO MAKE THE SKYLIGHT CUT A TRIANGLE



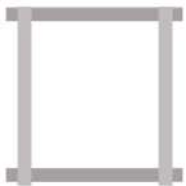
FOLD



GLUE TWO STRIPS TOGETHER



WINDOWS ARE MADE OF FOUR STRIPS GLUED TOGETHER



WINDOW

GLUE TWO THIN STRIPS TOGETHER AND THEN GLUE TO THE BACK OF WINDOW TO MAKE THE PANES



DOOR

FOR THE DOOR USE A FOLDED STRIP WITH A TRIANGLE GLUE INSIDE

USE STRIPS TO MAKE THE DOOR FRAME THEN CUT THE DOOR OUT OF THE BOX



CHIMNEY

FOLD AND GLUE



TAB FOR GLUE

CHECK THIS ANGLE AGAINST ROOF

CUT A PIECE LIKE THIS TO MAKE THE CHIMNEY

Materials:

bankersbox.fellows.com

Standard storage boxes,
spare cardboard, knife
or scissors & glue

Safety: please take care when using sharp objects



STORAGE BOXES

